



**Start moving.**

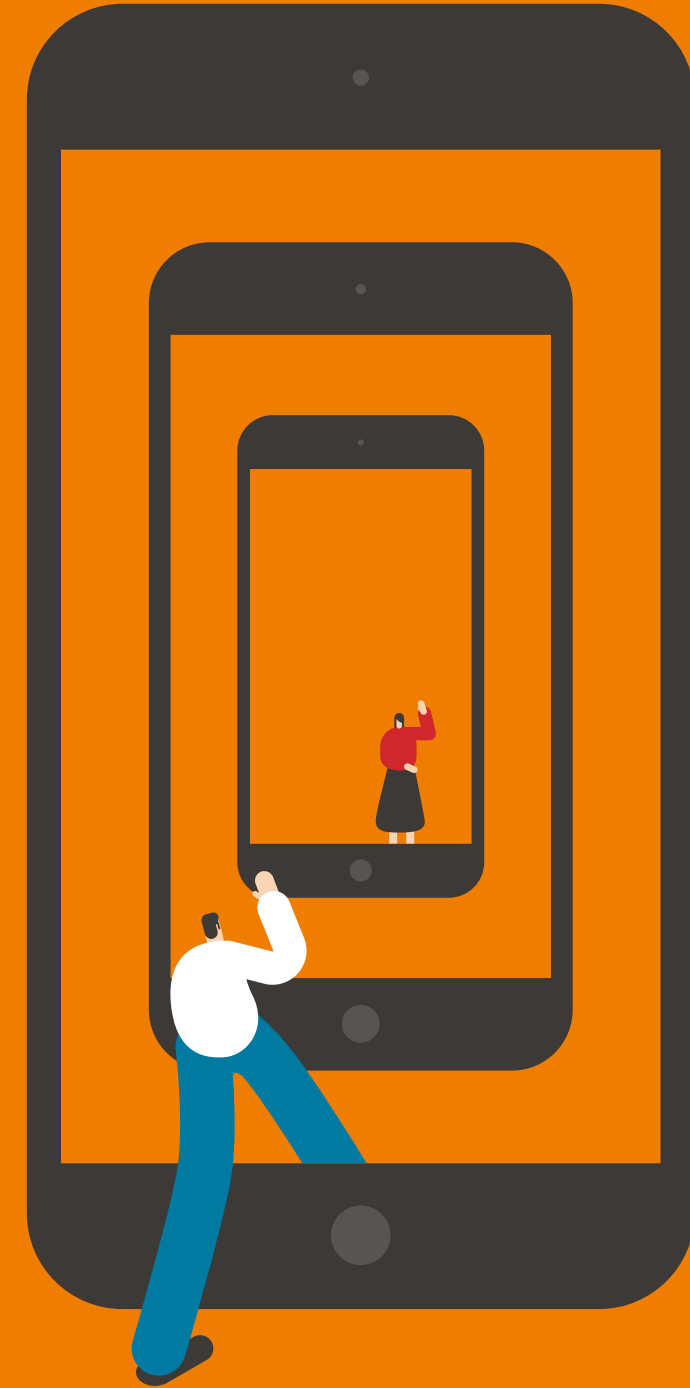
**The new  
SEAT Ibiza.**

# Your technical bit.

## Data & equipment.

At SEAT Service, we offer comprehensive inspections by skilled professionals based on the age and mileage of your car.

You'll be assured that your vehicle is in optimal condition, as our professionals perform all the services included in the SEAT Maintenance Programme – using only SEAT Genuine parts.



# The technical bit.

| Safety   | Reference | Style          | Xcellence      | FR             |
|--|-----------|----------------|----------------|----------------|
| Tool kit   | ■         | ■              | ■              | ■              |
| iSOFIX + Top Tether Anchors in side rear seats (1+1)   | ■         | ■              | ■              | ■              |
| Anti-lock brake system (ABS)   | ■         | ■              | ■              | ■              |
| Front airbags (driver & co-driver)   | ■         | ■              | ■              | ■              |
| Height adjustable rear headrests (2)   | ■         | ■              | ■              | ■              |
| Rear drum brakes <sup>1</sup>  | ■         | ■              | ■              | ■              |
| Seat belt reminders  | ■         | ■              | ■              | ■              |
| Three points front safety belts  | ■         | ■              | ■              | ■              |
| Three points rear safety belts   | ■         | ■              | ■              | ■              |
| Tyre fit   | ■         | ■              | ■              | ■              |
| Central locking system   | ■         | ■              | -              | ■              |
| KESSY Keyless w/o safe   | -         | ●              | ■              | ●              |
| KESSY Keyless with safe  | -         | ● <sup>2</sup> | ● <sup>2</sup> | ● <sup>2</sup> |
| Rear Park Assist   | ●         | ●              | ■              | ●              |
| <b>Vision Pack:</b><br>Park distance control (front & rear)  | -         | ●              | ●              | ●              |
| <b>Vision plus Pack:</b><br>Park distance control (front & rear) + Rear view camera  | -         | ●              | ●              | ●              |
| <b>Safety Pack: (EU28)</b><br>Electronic Stability Control (ESC)<br>Front Assist incl. autonomous emergency braking system, without ACC<br>Three rear head restraints<br>Board computer<br>Driver and front passenger airbag with passenger airbag deactivation<br>Side airbag in front, with curtain airbag<br>Tyre pressure monitoring system<br>Hill hold control<br>3-point seat belts, outer rear with ECE label<br>Speed limiter without cruise control system<br>Windshield wiper intermittent control with photosensor<br>Three points front safety belts<br>Seat belt reminder, electric contact in the buckle, advanced safety equipment<br>Separate daytime running lights with automatic headlamp activation | ●         | ●              | ●              | ●              |
| <b>Adaptive Cruise Control:</b><br>Front Assist incl. autonomous emergency braking system for ACC high<br>Tiredness Recognition<br>Board computer plus   | -         | ● <sup>3</sup> | ● <sup>3</sup> | ● <sup>3</sup> |

■ Standard  
● Optional  
- Not available

<sup>1</sup> Disk brakes for engines with > 100HP.

<sup>2</sup> Requires alarm - WAS.

<sup>3</sup> Stop&Go function with DSG Gearbox.

Not compatible with 1.0 MPI / 1.6 MPI Engines.

<sup>4</sup> Includes reading lights in ceiling.

Requires Radio with Bluetooth®.

<sup>5</sup> Not available with CNG engine.

<sup>6</sup> Only available for Engines > 100HP.

<sup>7</sup> Only available for Beatsaudio™.

<sup>8</sup> Fog lamps frame painted: Xcellence:

Atom grey - FR: Brilliant black.

<sup>9</sup> In Style includes chromed waist moulding.

<sup>10</sup> Requires Spare Wheel.

<sup>11</sup> Requires rear power windows & Safety Pack.

<sup>12</sup> Includes box under co-driver seat.

| Exterior  | Reference | Style          | Xcellence      | FR             |
|---|-----------|----------------|----------------|----------------|
| Panoramic Sunroof <sup>5</sup>  | ●         | ●              | ●              | ●              |
| Body-colored bumpers  | ■         | ■              | ■              | -              |
| FR sport bumpers  | -         | -              | -              | ■              |
| Upper front grill in glossy black   | ■         | -              | -              | -              |
| Upper front grill in chrome   | -         | ■              | ■              | ■              |
| Steel wheels 14" Reference  | ■         | -              | -              | -              |
| Steel wheels 15" Urban  | ●         | ■              | -              | -              |
| Alloy wheels 15" Enjoy  | ●         | ●              | ■              | -              |
| Alloy wheels 16" Design   | -         | ●              | -              | -              |
| Alloy wheels 16" Design Machined  | -         | -              | ●              | -              |
| Alloy wheels 17" Dynamic  | -         | -              | -              | ■              |
| Alloy wheels 17" Dynamic Machined   | -         | -              | ●              | -              |
| Alloy wheels 18" Performance <sup>5</sup>   | -         | -              | -              | ●              |
| All season tyres + 15" Steel wheels   | ●         | ●              | -              | -              |
| All season tyres + 15" Alloy wheels   | ●         | ●              | ●              | -              |
| Red calipers <sup>6</sup>   | -         | -              | -              | ● <sup>6</sup> |
| Wheel bolts with anti-theft protection (unlockable)   | ●         | ●              | ●              | ●              |
| Spare wheel with original steel wheel size <sup>5</sup>   | ●         | ●              | ●              | -              |
| Reduced spare wheel 14" <sup>5</sup>  | ●         | ●              | ●              | ●              |
| Reduced spare wheel 15" <sup>5</sup>  | -         | ●              | ●              | ●              |
| Emergency spare wheel (minimized) -18" <sup>5</sup>   | -         | ● <sup>7</sup> | ● <sup>7</sup> | ● <sup>7</sup> |
| Twin halogen headlights with halogen Daytime Running Lights   | ■         | ■              | -              | -              |
| Halogen Taillights  | ■         | ■              | -              | -              |
| LED Taillights  | -         | -              | ■              | ■              |
| Rear fog light  | ■         | ■              | ■              | ■              |
| Front fog lamps with cornering function   | ●         | ●              | ■ <sup>8</sup> | ■ <sup>8</sup> |
| Full Front LED lights + Rear LED + Licence plate LED + Interior Ambient Light                         | -         | ●              | -              | -              |
| Full Front LED lights + Licence plate LED   | -         | -              | ●              | ●              |
| Light pack [DRL LED lights + Rear LED + Foot & Console ambient light]                                 | -         | ●              | ■              | ■              |
| Dark tinted windows   | -         | ● <sup>9</sup> | ●              | ●              |
| <b>Towing device</b> <sup>5, 10</sup> :<br>Tool kit and jack<br>Trailer hitch, removable and lockable | ●         | ●              | ●              | ●              |
| <b>Towing device preparation:</b><br>Trailer hitch preparation  | ●         | ●              | ●              | ●              |
| <b>Car film protection:</b><br>Transport protection film  | ●         | ●              | ●              | ●              |

| Interior   | Reference | Style           | Xcellence       | FR              |
|--|-----------|-----------------|-----------------|-----------------|
| Multi-function steering wheel  | -         | ■               | -               | -               |
| Leather multi-function steering wheel with "X" pin   | -         | -               | ■               | -               |
| Leather multi-function sports steering wheel with "FR" pin   | -         | -               | -               | ■               |
| Left-hand drive vehicle  | ■         | ■               | ■               | ■               |
| Right hand drive   | ●         | ●               | ●               | ●               |
| Comfort Reference seats  | ■         | -               | -               | -               |
| Foldable rear seats (Not splitting)  | ■         | -               | -               | -               |
| Comfort Style seats  | -         | ■               | -               | -               |
| Xcellence seats  | -         | -               | ■               | -               |
| FR seats   | -         | -               | -               | ■               |
| Split & foldable rear seats  | ●         | ■               | ■               | ■               |
| Luggage pockets on backrest front seats  | -         | -               | ■               | -               |
| <b>Luxe Pack:</b><br>Comfort seats in front<br>Alcantara® black seats<br>Interior door side trim panel with textile + Dashboard in simil leather<br>Three rear head restraints | -         | -               | ● <sup>11</sup> | ● <sup>11</sup> |
| Height adjustable driver seat  | ■         | ■               | -               | -               |
| Height-adjustable front seats (Driver & Co-Driver)   | -         | -               | ■               | ■               |
| Chrome pack High   | -         | -               | ■               | ■               |
| Interior door and side trim panel with textile and decorative moulding   | -         | -               | ■               | ■               |
| <b>Storage Pack:</b><br>Drawer under left front seat<br>Front center armrest   | -         | ●               | ■               | ●               |
| <b>Double floor Pack:</b> <sup>5</sup><br>Drawers under front seats<br>Mounting fixture in luggage compartment<br>Plane rear cargo area  | -         | ● <sup>12</sup> | ● <sup>12</sup> | ● <sup>12</sup> |
| Smoker pack  | ●         | ●               | ●               | ●               |
| Foldable trunk cover   | ■         | ■               | ■               | ■               |
| Leather gearshift knob   | -         | -               | ■               | ■               |
| Leather handbrake  | -         | -               | ■               | ■               |
| <b>Gloss Pack:</b><br>Dashboard/door panel in Glossy black   | -         | -               | ●               | -               |
| <b>Leather Pack:</b><br>Chrome pack High<br>Board computer plus<br>Leather gearshift knob<br>Leather multi-function steering wheel<br>Leather hand brake                       | -         | ●               | -               | -               |
| <b>Red belts:</b><br>Center rear 3-point seat belt in Red<br>3-point seat belts in front in Red<br>3-point seat belts, outer in Red  | -         | -               | -               | ●               |
| Without board computer   | ■         | -               | -               | -               |

| Interior  | Reference | Style | Xcellence | FR |
|---|-----------|-------|-----------|----|
| Board computer <sup>12</sup>  | -         | ■     | -         | -  |
| Board computer Plus   | -         | -     | ■         | ■  |
| <b>Color &amp; Trim Style:</b>  |           |       |           |    |
| Driver and Co-driver sunvisors with mirrors and card-holder only for driver |           |       |           |    |
| Chrome pack basic   | -         | ■     | -         | -  |
| Door handles & mirror case painted in body colour                           |           |       |           |    |
| STYLE Comfort seats   |           |       |           |    |
| Upper front grill frame chromed   |           |       |           |    |
| <b>Color &amp; Trim XCELLENCE:</b>  |           |       |           |    |
| Chromed instrument pannel   |           |       |           |    |
| Chromed side window frame   |           |       |           |    |
| Door handels painted in body colour & mirror case painted in Atom Grey      |           |       |           |    |
| Net on central console passenger  |           |       |           |    |
| Gear-knob decorative inserts/Bag stitching in Mystic                        | -         | -     | ■         | -  |
| Greenhouse black  |           |       |           |    |
| Driver and Co-driver sunvisors with mirrors and card-holder only for driver |           |       |           |    |
| Atom Grey decorative inserts in front fog lamps frame                       |           |       |           |    |
| Upper front grill frame chromed   |           |       |           |    |
| XCELLENCE seats   |           |       |           |    |
| <b>Color &amp; Trim FR:</b>   |           |       |           |    |
| Rear spoiler FR   |           |       |           |    |
| Driver and Co-driver sunvisors with mirrors and card-holder only for driver |           |       |           |    |
| Chromed instrument pannel   |           |       |           |    |
| Painted side window frame Brilliant black                                   |           |       |           |    |
| FR logo   |           |       |           |    |
| Door handles painted in body colour & mirror case painted in Glossy Black   | -         | -     | -         | ■  |
| Net on central console passenger  |           |       |           |    |
| FR sports seats   |           |       |           |    |
| Gear-knob decorative inserts/Bag stitching in Red                           |           |       |           |    |
| Glossy Black decorative inserts in front fog lamps frame                    |           |       |           |    |
| Upper front grill frame chromed   |           |       |           |    |
| <b>Electronic</b>   |           |       |           |    |
| <b>Driver Pack<sup>13</sup>:</b>  |           |       |           |    |
| Tiredness Recognition System  | ●         | ●     | ■         | ■  |
| Cruise Control  |           |       |           |    |
| Electrically adjustable door mirrors  | ■         | ■     | -         | -  |
| Electrically adjustable and heated door mirrors                             | -         | -     | ■         | ■  |

■ Standard  
● Optional  
- Not available

<sup>12</sup> Required for CNG engine.  
<sup>13</sup> Requires Multifunction steering wheel & Safety packs WSF/PSA.  
<sup>14</sup> Requires Board computer or Safety pack (includes 1 SD Card in Fascia).  
<sup>15</sup> Includes 1 SD Card in Fascia.  
<sup>16</sup> Includes 1 SD Card + 1 CD player in Glovebox.  
<sup>17</sup> Includes 2 SD Card + 1 CD player in Glovebox.  
<sup>18</sup> In Reference only for fleets.  
<sup>19</sup> Requires Media System Plus or Navigation System.  
<sup>20</sup> Requires Infotainment system.  
<sup>21</sup> Not available with CNG engine.  
<sup>22</sup> GSM Amplifier not available in all markets.  
<sup>23</sup> Not compatible with CNG engines. Spare wheel as optional only PG6.  
<sup>24</sup> Compatible with Qi Technology Requires Media System Plus or Navigation System.  
<sup>25</sup> Not compatible with 1.0 MPI / 1.6 MPI Engines (includes SEAT Drive profile).  
<sup>26</sup> Profiles pre-set: Comfort, Eco, Sport, & Individual. Not compatible with 1.0 MPI / 1.6 MPI Engines.

| Electronic   | Reference       | Style | Xcellence | FR |
|--|-----------------|-------|-----------|----|
| Rear power windows   | ●               | ●     | ●         | ●  |
| Rear window wiper and washer system with intermitent control                               | ■               | ■     | ■         | ■  |
| Manual dimming interior rear view mirror   | ■               | ■     | ■         | ■  |
| <b>Electronic Pack:</b>  |                 |       |           |    |
| Separate daytime running lights with automatic headlamp activation and Coming Home feature | -               | ●     | ●         | ●  |
| Breakaway interior rearview mirror, auto-dimming   |                 |       |           |    |
| Windshield wiper intermittent control with light/rain sensor                               |                 |       |           |    |
| Exterior mirrors, power-folding and power-adjustable/heated                                |                 |       |           |    |
| Electronic vehicle immobilization device   | ■               | ■     | ■         | ■  |
| Front power windows with comfort operation and circuit breaker.                            | ■               | ■     | ■         | ■  |
| Mechanical window regulators rear  |                 |       |           |    |
| Single-tone horn   | ■               | ■     | ■         | ■  |
| Windshield wiper with intermittent control and potentiometer (four speeds)                 | ■               | ■     | ■         | ■  |
| Air conditioning   | ●               | ■     | ■         | ■  |
| Dust and pollen filter   | ●               | ■     | ■         | ■  |
| Climatronic BI-Zone + Air Care   | -               | ●     | ●         | ●  |
| 2 foldable keys with remote control function   | ■               | ■     | ■         | ■  |
| <b>Alarm:</b>  |                 |       |           |    |
| Anti-theft alarm system, interior monitoring, backup horn, and towing protection           | ●               | ●     | ●         | ●  |
| Radio remote controlled central locking operated from inside and safe securing             |                 |       |           |    |
| Front reading lights driver/co-driver  | -               | ■     | ■         | ■  |
| Interior light in footwell & Central Console & Door pannel                                 | -               | -     | ■         | ■  |
| 6 speakers   | -               | ■     | ■         | ■  |
| AUX-in jack and 1 USB port   | -               | ■     | ■         | ■  |
| Bluetooth®   | -               | ■     | ■         | ■  |
| Car stereo preinstallation + antitheft roof antenna  | -               | ■     | ■         | ■  |
| <b>Media System Touch:</b>   |                 |       |           |    |
| 4 speakers   |                 |       |           |    |
| 1 SD slot  | ●               | -     | -         | -  |
| AUX-in jack and 1 USB port   |                 |       |           |    |
| Car stereo preinstallation + antitheft roof antenna  |                 |       |           |    |
| Media system Touch 5"  |                 |       |           |    |
| <b>Connect Pack:</b>   |                 |       |           |    |
| Multi-function steering wheel  |                 |       |           |    |
| 4 speakers   |                 |       |           |    |
| 1 SD slot  | ● <sup>14</sup> | -     | -         | -  |
| AUX-in jack and 1 USB port   |                 |       |           |    |
| Bluetooth®   |                 |       |           |    |
| Car stereo preinstallation + antitheft roof antenna  |                 |       |           |    |
| Media system Touch 5"  |                 |       |           |    |

| Electronic   | Reference       | Style           | Xcellence       | FR              |
|--|-----------------|-----------------|-----------------|-----------------|
| <b>5" Media System Colour<sup>12 15</sup>:</b>         |                 |                 |                 |                 |
| Multi-function steering wheel                          |                 |                 |                 |                 |
| 6 speakers   |                 |                 |                 |                 |
| 1 SD slot  | ●               | ■               | ■               | ■               |
| Media-system colour 5"                                 |                 |                 |                 |                 |
| AUX-in jack and 1 USB port                             |                 |                 |                 |                 |
| Bluetooth®   |                 |                 |                 |                 |
| Car stereo preinstallation + antitheft roof antenna    |                 |                 |                 |                 |
| <b>8" Media System Plus:</b>                           |                 |                 |                 |                 |
| Bluetooth®   |                 |                 |                 |                 |
| AUX-in jack and 2 USB ports                            |                 |                 |                 |                 |
| Antenna for AM/FM reception, "diversity"               |                 |                 |                 |                 |
| Board computer plus                                    | -               | ● <sup>16</sup> | ● <sup>16</sup> | ● <sup>16</sup> |
| 6 speakers   |                 |                 |                 |                 |
| 1 SD slot  |                 |                 |                 |                 |
| Media System Plus 8" Black pannel                      |                 |                 |                 |                 |
| Voice control  |                 |                 |                 |                 |
| <b>Navigation System<sup>17</sup>:</b>                 |                 |                 |                 |                 |
| Bluetooth®   |                 |                 |                 |                 |
| AUX-in jack and 2 USB ports                            |                 |                 |                 |                 |
| Antenna for AM/FM reception, "diversity"               |                 |                 |                 |                 |
| Navigation System - standard                           | ● <sup>18</sup> | ●               | ●               | ●               |
| Board computer plus                                    |                 |                 |                 |                 |
| 6 speakers   |                 |                 |                 |                 |
| 2 SD slot  |                 |                 |                 |                 |
| Media System Plus 8" Black pannel                      |                 |                 |                 |                 |
| Voice control  |                 |                 |                 |                 |
| <b>Full Link Technology:</b>                           |                 |                 |                 |                 |
| Includes MirrorLink™, Apple CarPlay™ and Android Auto™ | -               | ● <sup>19</sup> | ● <sup>19</sup> | ● <sup>19</sup> |
| AUX-in jack and 2 USB ports + Full link                |                 |                 |                 |                 |
| <b>DAB - Digital radio<sup>20</sup>:</b>               |                 |                 |                 |                 |
| Digital radio reception                                | ●               | ●               | ●               | ●               |
| <b>BeatsAudio™<sup>21</sup>:</b>                       |                 |                 |                 |                 |
| 300W Amplifier: 6 premium speakers + 1 Subwoofer       | -               | ● <sup>22</sup> | ● <sup>22</sup> | ● <sup>22</sup> |
| <b>Connectivity Box:</b>                               |                 |                 |                 |                 |
| Wireless charger + GSM Amplifier <sup>23</sup>         | -               | ● <sup>24</sup> | ● <sup>24</sup> | ● <sup>24</sup> |
| <b>Navigation Maps:</b>                                |                 |                 |                 |                 |
| SD card with map updates for 1 year                    | ●               | ●               | ●               | ●               |
| <b>Navigation Maps with Mapcare:</b>                   |                 |                 |                 |                 |
| SD card with Mapcare (3 years - 6 updates)             | ●               | ●               | ●               | ●               |
| Dual Ride (Switchable suspension) <sup>21</sup>        | -               | -               | -               | ● <sup>25</sup> |
| SEAT Drive Profile <sup>21</sup>                       | -               | ● <sup>26</sup> | ● <sup>26</sup> | ■ <sup>26</sup> |
| <b>Winter Pack:</b>                                    |                 |                 |                 |                 |
| Heated washer nozzles in front                         | ●               | ●               | ●               | ●               |
| Seat heater for front seats separately controlled      |                 |                 |                 |                 |
| Height-adjustable front seats (Driver & Co-Driver)     |                 |                 |                 |                 |

# Accessories.

## Performance

|  |                |
|--|----------------|
| Diamond Cut in Piano Black 18" alloy wheel | 6F0071498      |
| Hub cap - Desire Red                       | 6F0071409C 0X1 |
| Hub cap - Mystery Blue                     | 6F0071409C W5L |
| Diamond Cut in Piano Black 17" alloy wheel | 6F0071497      |
| Center insert - Silver                     | 6F0071409D     |
| Center insert - Desire Red                 | 6F0071409B     |
| Center insert - Mystic Magenta             | 6F0071409A     |
| Center insert - Mystery Blue               | 6F0071409      |
| Anti-theft screws for rims                 | 000071510A     |
| Front styling kit                          | 6F0071606 GRU  |
| Side skirts                                | 6F0071685 GRU  |
| Rear Bumper Diffuser                       | 6F0071611 9B9  |
| Rear Spoiler                               | 6F0071640 GRU  |

## Exterior

|   |               |
|---|---------------|
| Chromed hatchback moulding              | 6F0071360     |
| Black hatchback moulding                | 6F0071360A    |
| Exterior mirror covers - Piano Black    | 6F0072530 041 |
| Exterior mirror covers - Desire Red     | 6F0072530 0X1 |
| Exterior mirror covers - Mystic Magenta | 6F0072530 S4Y |
| Exterior mirror covers - Mystery Blue   | 6F0072530 W5L |

## Interior

|   |                |
|---|----------------|
| Additional interior mirror                              | 000084418A     |
| Interior mirror - Black                                 | 6F0072540 041  |
| Interior mirror - Desire Red                            | 6F0072540 0X1  |
| Interior mirror - Mystic Magenta                        | 6F0072540 S4Y  |
| Interior mirror - Mystery Blue                          | 6F0072540 W5L  |
| Internal mirror electrochromed - Black                  | 6F0072540A 041 |
| Internal mirror electrochromed - Desire Red             | 6F0072540A 0X1 |
| Internal mirror electrochromed - Mystic Magenta         | 6F0072540A S4Y |
| Internal mirror electrochromed - Mystery Blue           | 6F0072540A W5L |
| Center console mats "Barcelona streets" - Set of 4 mats | 6F0061169      |
| Center console mats "Barcelona streets" - Set of 3 mats | 6F0061169A     |
| Spherical cup holder                                    | 1SL061129A     |
| Net between seats - Black                               | 6F0017221A     |
| Net between seats - Desire Red                          | 6F0017221B 0X1 |
| Net between seats - Mystic Magenta                      | 6F0017221B S4Y |
| Net between seats - Mystery Blue                        | 6F0017221B W5L |

## Interior

|                        |            |
|------------------------|------------|
| Foil side sills        | 6F0071310  |
| Illuminated side sills | 6J0071691C |
| Side sun shades        | 6F0064365  |
| Rear sun shades        | 6F0064365A |
| Espresso machine       | 000069641  |

## Sport customization

|  |                |
|--|----------------|
| Steering wheel                         | 6F0072390 0X1  |
| Gear knob 5 sp                         | 6F0064230 0X1  |
| Gear knob 6 sp                         | 6F0064230A 0X1 |
| Key cover                              | 6F0087013C     |
| Pedals                                 | 6F0064200 0X1  |
| Footrest                               | 6F0071750A 0X1 |
| Floor mats                             | 6F1863011C LOE |
| Floor mats (Right hand drive vehicles) | 6F2863011C LOE |
| Inox side sills                        | 6F0071691      |
| Exterior sticker                       | 6F0071316C     |

## Urban Tech customization

|  |                |
|--|----------------|
| Steering wheel                         | 6F0072390 W5L  |
| Gear knob 5 sp                         | 6F0064230 W5L  |
| Gear knob 6 sp                         | 6F0064230A W5L |
| Key cover                              | 6F0087013B     |
| Pedals                                 | 6F0064200 W5L  |
| Footrest                               | 6F0071750A W5L |
| Floor mats                             | 6F1863011B LOE |
| Floor mats (Right hand drive vehicles) | 6F2863011B LOE |
| Inox side sills                        | 6F0071691A     |
| Exterior sticker                       | 6F0071316B     |

## Trend customization

|  |                |
|--|----------------|
| Steering wheel                         | 6F0072390 S4Y  |
| Gear knob 5 sp                         | 6F0064230 S4Y  |
| Gear knob 6 sp                         | 6F0064230A S4Y |
| Key cover                              | 6F0087013A     |
| Pedals                                 | 6F0064200 S4Y  |
| Footrest                               | 6F0071750A S4Y |
| Floor mats                             | 6F1863011A LOE |
| Floor mats (Right hand drive vehicles) | 6F2863011A LOE |
| Inox side sills                        | 6F0071691B     |
| Exterior sticker                       | 6F0071316A     |

## Transport

|   |                        |
|---|------------------------|
| Surf rack   | 000071120HA            |
| Ski rack - 4 pairs  | 000071129J             |
| Ski rack - 6 pairs  | 000071129K             |
| Roof box - 400l   | 000071200T             |
| Roof box - 420l   | 000071200AB            |
| Roof box - 450l   | 000071180A             |
| Roof Bars   | 6F0071151 - 6F0071151A |
| Bike rack   | 5F9071128              |
| Electric kit with pre-installation                                | 6F0055204              |
| Electric kit without pre-installation                             | 6F1055204A             |
| Electric kit without pre-installation (Right hand drive vehicles) | 6F2055204A             |
| Tow bar   | 6F0803881              |
| Towing bike rack  | 000071128G             |
| Towing ski rack   | 000071129L             |

## Protection

|  |                |
|--|----------------|
| Front mud flaps                                | 6F0075111      |
| Rear mud flaps                                 | 6F0075101      |
| Tyre cover                                     | 000071770C     |
| Black car cover                                | 6F0061701A     |
| Rear bumper protective film                    | 6F0071363      |
| Key cover - FR                                 | 000087013AE    |
| Key cover - SEAT Logo                          | 000087013AF    |
| Key cover - CUPRA                              | 000087013AJ    |
| Rubber mats                                    | 6F1061500 041  |
| Rubber mats (Right hand drive vehicles)        | 6F2061500 041  |
| Textile mats Trail                             | 6F1061675 041  |
| Textile mats Serie                             | 6F1863011 LOE  |
| Textile mats Serie (Right hand drive vehicles) | 6F2863011 LOE  |
| Textile mats Velpic®                           | 6F1061675A 041 |
| Boot organizer                                 | 575061205A     |
| Separation grille                              | 6F0017221      |
| Foam boot tray                                 | 6F0061180      |
| Semi rigid boot tray                           | 6F0061180A     |
| Reversible boot mat without double level       | 6F0061210      |
| High walls boot tray                           | 6F0061201      |

**Infotainment**

|  |                |
|--|----------------|
| GPS Ultra                                | 000051818CG    |
| Holder with magnetic suction cup         | 000051991K     |
| Nextbase 101 Elite                       | 000054731A     |
| Parrot® MiniKit Neo 2 HD - Black         | 000051473AE041 |
| Parrot® MiniKit Neo 2 HD - Blue          | 000051473AENBP |
| Parrot® MiniKit Neo 2 HD - Red           | 000051473AES3H |
| Parrot® MiniKit Neo 2 HD - Green         | 000051473AES6A |
| Start 42 EU 23 countries (Lifetime maps) | 000051818AQ    |
| Start 62 EU 45 (Lifetime maps)           | 000051818CE    |
| GO 520 EU 45 (Lifetime maps)             | 000051818CJ    |
| GO 620 EU 45 (Lifetime maps)             | 000051818CK    |
| GO 5200 EU 45 (Lifetime maps)            | 000051818CL    |
| GO 6200 EU 45 (Lifetime maps)            | 000051818CM    |
| Twonav Anima+ GPS                        | 000051818CH    |
| Universal magnetic mount                 | 000061129F     |
| Navlet 7i Full Hd Tablet + GPS           | 000063500M     |
| SEAT Full Link                           | 5F0054830      |
| Tetrax XWAY                              | 000096320GMAAA |
| Tetrax SMART                             | 000096320GMAAB |
| Tetrax FIX                               | 000096320GMAAC |

**Security**






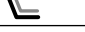

|   |            |
|---|------------|
| Peke G0 Plus                              | 000019907  |
| Seat Fair G0/1 S iSOFiX                   | 000019230J |
| Seat Peke G1 iSOFiX Duo Plus              | 000019909  |
| Seat Peke G3 Plus                         | 000019906E |
| Seat Peke G3 Kidfix                       | 000019904  |
| Child safety Kidfix XP                    | 000019906M |
| iSOFiX Base                               | 000019230H |
| Top Tether Safety Belt                    | 3R0019900  |
| 9,900 mAh battery jump starter            | 000051763F |
| 15,000 mAh battery jump starter + charger | 000051763H |
| Warning triangle                          | 000093056A |
| 2 Emergency triangle pack                 | 000093600C |
| Fluorescent vest                          | 000093056J |
| Safety Pack (triangles + vest)            | 000093990R |
| Triangle fastening support                | 6K0860265  |
| First-aid kit                             | 6L0093000  |

**Snow chains:**

|                        |             |
|------------------------|-------------|
| Autosock (185/70 R14)  | 000091375AE |
| Autosock (185/65 R15)  | 000091375AE |
| Autosock (195/55 R16)  | 000091375AE |
| Autosock (215/45 R17)  | 000091301B  |
| Autosock (215/40 R18)  | 000091301B  |
| Turisport (185/70 R14) | 000091303C  |
| Turisport (185/65 R15) | 000091303D  |
| Easygrip (185/70 R14)  | 000091375H  |
| Easygrip (185/65 R15)  | 000091375G  |
| Easygrip (195/55 R16)  | 000091375EM |

**Maintenance**

|                                    |                |
|------------------------------------|----------------|
| Insect remover                     | 000096320FRABH |
| Interior cleaner                   | 000096320FRABK |
| Dashboard Cleaner                  | 000096320FRABM |
| 300ml concentrated shampoo         | 000096320GFAAB |
| 300ml windscreen wash              | 000096320GFAAD |
| Summer Maintenance Kit             | 000096354B     |
| Touch-up pencil Candy White        | 000098500L B9A |
| Touch-up pencil Mediterranean Blue | 000098500LM511 |
| Touch-up pencil Mystic Magenta     | 000098500LMS4Y |
| Touch-up pencil Eclipse Orange     | 000098500LMW2Y |
| Touch-up pencil Mystery Blue       | 000098500LMW5L |
| Touch-up pencil Desire Red         | 000098500LMOX1 |
| Touch-up pencil Urban Silver       | 000098500LMZ7G |
| Touch-up pencil Pirineos Grey      | 000098500LMX7R |
| Touch-up pencil Midnight Black     | 000098500LMY9T |
| Touch-up pencil Nevada White       | 000098500LMS9R |

| Child car seats              | Age (approximate)   | Weight      | Orientation   |
|------------------------------|---------------------|-------------|---|
| Peke G0 Plus                 | Up to 15 months     | Up to 13 kg |    |
| Seat Fair G0/1 S iSOFiX      | Up to 4 years       | Up to 18 kg |   |
| Seat Peke G1 iSOFiX Duo Plus | 9 months to 4 years | 9 to 18 kg  |    |
| Seat Peke G3 Plus            | 4 to 12 years       | 15 to 36 kg |    |
| Seat Peke G3 Kidfix          | 4 to 12 years       | 15 to 36 kg |    |
| Child safety Kidfix XP       | 4 to 12 years       | 15 to 36 kg |    |

# Engine specs.

| Engine                              | 1.0 MPI 65 HP (48 kW)<br>Start/Stop                   | 1.0 MPI 75 HP (55 kW)<br>Start/Stop | 1.0 EcoTSI 95 HP<br>(70 kW) Start/Stop | 1.0 EcoTSI 115 HP<br>(85 kW) Start/Stop<br>DQ Start/Stop | 1.5 TSI EVO 150 HP<br>(110 kW) Start/Stop | 1.6 MPI 110 HP<br>(81 kW)   AQ | 1.0 TGI 90 HP<br>(66 kW) Start/Stop                         |
|-------------------------------------|---|-------------------------------------|--|--|---|--------------------------------|---|
| Cylinder/Valve (total)              | 3/12  | 3/12                                | 4/16                                   | 3/12   | 4 / 16                                    | 4/16                           | 3 / 12  |
| Displacement (cc)                   | 999   | 999                                 | 1598                                   | 999  | 1498                                      | 1598                           | 999   |
| Cylinder bore and stroke (mm)       | 74.5 × 76.4   | 74.5×76.4                           | 76.5×86.9                              | 74.5 × 76.4  | 74.5 × 85.9                               | 76.5 × 86.9                    | 74.5 × 76.4   |
| Compression ratio                   | 10.5  | 10.5                                | 10.5                                   | 10,5   | 10,5                                      | 10.5                           | 10,5  |
| Maximum power (KW [HP]/rpm)         | 48 (65) / 5000-6000                                   | 55 (75)/6200                        | 81 (110)/5800                          | 85 (115) / 5000-5500                                     | 110 (150) / 5000-6000                     | 81 (110) / 5800                | 66 (90) / 4500-5800   |
| Maximum torque (Nm/rpm)             | 95 / 3000-4300  | 95/3000-4300                        | 155/3800-4000                          | 200 / 2000-3500  | 250 / 1500-3500                           | 155 / 3800-4000                | 160 / 1900-3500   |
| Fuel supply system                  | Multipoint injection                                  | Multipoint injection                | Multipoint injection                   | TSI-Direct Injection                                     | TSI-Direct Injection                      | Multipoint injection           | TSI-Direct Injection<br>/ CNG mode:<br>Multipoint injection |
| Ignition                            | Positiv Ignition (Electronic map-controlled ignition) |                                     |  |  |   |                                |   |
| Atmospheric/Supercharged            | Natural aspirated                                     | Natural aspirated                   | Natural aspirated                      | Turbo charged  | Turbo charged                             | Natural aspirated              | Turbo charged   |
| Fuel type                           | ROZ 95  | ROZ 95                              | ROZ 95                                 | ROZ 95   | ROZ 95                                    | ROZ 95                         | ROZ 95 / CNG  |
| Oil capacity in initial fill (l)    | 3.7   | 3.7                                 | 4.3                                    | 4,3  | 4,8                                       | 4.3                            | 4,3   |
| <b>Performance</b>                  |   |                                     |  |  |   |                                |   |
| Maximum speed (km/h)                | 162 (5a)  | 167 (4a)                            | 182 (a)                                | 195 (5a)   193 (6a)                                      | 215 (5a)                                  | 190   192                      | 180 (5a)  |
| Acceleration 0-80 km/h (s)          | 9.9   | 9.5                                 | 7.2                                    | 6.4   6.5  | 5,6                                       | 7.0   7.2                      | 7,9   |
| Acceleration 0-100 km/h (s)         | 15.2  | 14.7                                | 10.9                                   | 9.3   9.5  | 7,9                                       | 10.4   10.8                    | 12,1  |
| Acceleration 80-120 km/h (s)        | 23.5  | 17.3                                | 10.9                                   | 10.9   11  | 9,1                                       | 17.9   15.1                    | 19,4  |
| Acceleration 1000 m (s)             | 36.6  | 36.1                                | 32.8                                   | 30.8   31.4  | 30,6                                      | 32.1   32.4                    | 34  |
| <b>Fuel consumption</b>             |   |                                     |  |  |   |                                |   |
| Urban (l/100 km)                    | 6.0   | 6.0                                 | 5.8                                    | 5.8   5.6  | 6,2                                       | 8.2   8.1                      | 6.3 - 6.3   |
| Extra urban (l/100 km)              | 4.3   | 4.3                                 | 4.1                                    | 4.1   4.2  | 4,2                                       | 4.7                            | 4.3 - 4.1   |
| Combined (l/100 km)                 | 4.9   | 4.9                                 | 4.7                                    | 4,7  | 4,9                                       | 6.0                            | 5.0 - 4.9   |
| <b>CO<sub>2</sub> mass emission</b> |   |                                     |  |  |   |                                |   |
| CO <sub>2</sub> Urban (g/km)        | 137   | 137                                 | 130                                    | 132   128  | 142                                       | 189   191                      | 143 - 112   |
| CO <sub>2</sub> Extra Urban (g/km)  | 98  | 98                                  | 92                                     | 94   96  | 95  | 110   111                      | 97 - 74   |
| CO <sub>2</sub> Combined (g/km)     | 112   | 112                                 | 106                                    | 108  | 112                                       | 139   140                      | 114 - 88  |
| <b>Transmission</b>                 |   |                                     |  |  |   |                                |   |
| Gearbox type                        | MQ200-5F  | MQ200-5F                            | MQ200-5F                               | MQ200-6F GA<br>  DQ200-7F                                | MQ250-6F                                  | MQ200-5F   AQ160-6F            | MQ200-5F  |
| Ratios                              | I   | 3.769                               | 3.769                                  | 3.769  | 3.769   3.765                             | 3,778                          | 3.455   4.670   |
|                                     | II  | 1.955                               | 1.955                                  | 1.955  | 1.955   2.273                             | 2,118                          | 1.955   2.530   |
|                                     | III   | 1.212                               | 1.212                                  | 1.281  | 1.281   1.531                             | 1,36                           | 1.281   1.556   |
|                                     | IV  | 0.881                               | 0.881                                  | 0.927  | 0.973   1.122                             | 1,029                          | 0.881   1.130   |
|                                     | V   | 0.740                               | 0.740                                  | 0.740  | 0.778   1.176                             | 0,857                          | 0.673   0.859   |
|                                     | VI  | -                                   | -                                      | -  | 0.642   0.951                             | 0,733                          | -   0.686   |
|                                     | VII   | -                                   | -                                      | -  | -   0.795                                 | -                              | -   |
|                                     | R   | 3.454                               | 3.454                                  | 3.181  | 3.181   4.168                             | 3,6                            | 3.181   3.394   |
| Group 1 ratio                       | 4.929   | 4.929                               | 3.625                                  | 3.789   4.438  | 3,389                                     | 4.357   3.684                  | 3,933   |

| Transmission                               | 1.0 MPI 65 HP (48 kW)<br>Start/Stop   | 1.0 MPI 75 HP (55 kW)<br>Start/Stop   | 1.0 EcoTSI 95 HP<br>(70 kW) Start/Stop  | 1.0 EcoTSI 115 HP<br>(85 kW) Start/Stop<br>DQ Start/Stop  | 1.5 TSI EVO 150 HP<br>(110 kW) Start/Stop                                     | 1.6 MPI 110 HP<br>(81 kW)   AQ  | 1.0 TGI 90 HP<br>(66 kW) Start/Stop   |
|--|---|---|---|---|---|---|---|
| Group 2 ratio                              | -   | -   | -   | -   3.227   | -   | -   | -   |
| Group 3 ratio                              | -   | -   | -   | -   4.173   | -   | -   | -   |
| Speed 1000 rpm in IV/V/VI/VII (km/h)       | 26.0 / 31.0   | 26.0 / 31.0   | 33.6 / 42.1   | 31.0 / 38.7 / 47.0   22.9 / 30.1 / 37.2 / 44.5  | 32.7 / 39.3 / 45.9  | 29.7 / 38.9   27.4 / 36.1 / 45.2  | 32.6 / 42.7 / - / - / -   |
| <b>Chassis</b>                             |   |   |   |   |   |   |   |
| Front suspension                           | Independent type McPherson - coil springs - hydraulic shock absorber [Variable shock absorber settings (switchable shock absorber)] |   |   |   |   |   |   |
| Rear suspension                            | Semirigid axle, coil springs and hydraulic shock absorber [Variable shock absorber settings (switchable shock absorber)]            |   |   |   |   |   |   |
| Steering System                            | C-EPS (Column Electric Power System)  |   |   |   |   |   |   |
| Turning diameter (m)                       | 10.6  |   |   |   |   |   |   |
| Brake system                               | ESC Standard (including HHC, EBA, TCS, EDS, RKA, XDS), ABS Option for no EU6 Motor  |   |   |   |   |   |   |
| Front/Rear break type                      | Ventilated front brakes/Drum-Disc brakes in rear axle   |   |   |   |   |   |   |
| Front brakes (mm)                          | Ø 256x22  | Ø 256x22  | Ø 256x22  | Ø 276x24  | Ø 276x24  | Ø 276x24  | Ø 256x22  |
| Rear brakes (mm)                           | TB203x38  | TB203x38  | TB228x42  | Ø 230X9   | Ø 230X9   | Ø 230X9   | TB228x42  |
| <b>Wheels</b>                              |   |   |   |   |   |   |   |
| Rims                                       | 5Jx14 ET38<br>5.5Jx15 ET40<br>6.5Jx16 ET47<br>7Jx17 ET51<br>7Jx18 ET51  | 5Jx14 ET38<br>5.5Jx15 ET40<br>6.5Jx16 ET47<br>7Jx17 ET51<br>7Jx18 ET51  | 5Jx14 ET38<br>5.5Jx15 ET40<br>6.5Jx16 ET47<br>7Jx17 ET51<br>7Jx18 ET51  | 5.5JX15 ET40<br>6.5JX16 ET47<br>7JX17 ET51<br>7JX18 ET51  | 5.5JX15 ET40<br>6.5JX16 ET47<br>7JX17 ET51<br>7JX18 ET51                      | 5.5Jx15 ET40<br>6.5Jx16 ET47<br>7Jx17 ET51<br>7Jx18 ET51  | 5Jx14 ET38<br>5.5Jx15 ET40<br>6.5Jx16 ET47<br>7Jx17 ET51<br>7Jx18 ET51  |
| Tyres                                      | 185/70 R14 88H<br>185/65 R15 88H<br>185/65 R15 88V<br>195/55 R16 91W XL<br>215/45 R17 91W XL<br>215/40 R18 91W XL                   | 185/70 R14 88H<br>185/65 R15 88H<br>185/65 R15 88V<br>195/55 R16 91W XL<br>215/45 R17 91W XL<br>215/40 R18 91W XL | 185/70 R14 88H<br>185/65 R15 88H<br>185/65 R15 88V<br>195/55 R16 91W XL<br>215/45 R17 91W XL<br>215/40 R18 91W XL | 185/65 R15 88H<br>185/65 R15 88V<br>195/55 R16 91V XL<br>215/45 R17 91W XL<br>215/40 R18 91W XL | 185/65 R15 88V<br>195/55 R16 91V XL<br>215/45 R17 91W XL<br>215/40 R18 91W XL | 185/65 R15 88H<br>185/65 R15 88V<br>195/55 R16 91V XL<br>215/45 R17 91W XL<br>215/40 R18 91W XL | 185/70 R14 88H<br>185/65 R15 88H<br>185/65 R15 88V<br>195/55 R16 91V XL<br>215/45 R17 91W XL<br>215/40 R18 91W XL |
| <b>Dimensions</b>                          |   |   |   |   |   |   |   |
| Body type                                  | 5P  |   |   |   |   |   |   |
| Length/width/height (mm)                   | 4059/1780/1444  |   |   |   |   |   |   |
| Wheelbase (mm)                             | 2564  |   |   |   |   |   |   |
| Track front/rear (mm)                      | 1525/1505   |   |   |   |   |   |   |
| Boot capacity (l)                          | 355   |   |   |   |   |   |   |
| Fuel tank capacity (l)                     | 40  |   |   |   |   |   |   |
| <b>Weights</b>                             |   |   |   |   |   |   |   |
| In running order with driver (kg)          | 1091  | 1085   1091   | 1122  | 1140   1164   | 1184  | 1123   1153   | 1239  |
| Maximum weight with driver (kg) Front/Rear | 650 / 441   | 644 / 441   650 / 441   | 677 / 445   | 695 / 445   719 / 445   | 736 / 448   | 674 / 449   709 / 444   | 678 / 561   |
| Maximum weight allowed (kg)                | 1510 / 1530 / 1570 * 1610 *   | 1500 / 1520 / 1560 / 1600   1510 / 1530 / 1570 / 1610 *   | 1540 - 1640 *   | 1560 / 1580 / 1620 / 1660 *   1580 / 1600 / 1640 / 1680 *                                       | 1600 / 1620 / 1660 / 1700 *   | 1530 / 1550 / 1590 / 1630 *   1570 / 1590 / 1630 / 1670 *                                       | 1640*   |
| Maximum weight without brake (kg)          | 540   | 580   540   | 560   | 570   580   | 590   | 560   570   | -   |
| Maximum weight w/brake 8% (kg)             | 1000  | 1000  | 1100  | 1200  | 1200  | 1100  | -   |
| Maximum weight w/brake 12% (kg)            | 800   | 800   | 1000  | 1100  | 1200  | 1000  | -   |

\* MMTA varia en función del acabado comercial

| Engine                           | 1.6 TDI 80 HP (59 KW)<br>Start/Stop | 1.6 TDI 95 HP (70 KW)<br>Start/Stop  <br>DSG Start/Stop | 1.6 TDI 115 HP (85 KW)<br>Start/Stop |
|----------------------------------|-------------------------------------|---|--------------------------------------|
| Cylinder/Valve (total)           | 4 / 16                              | 4 / 16  | 4 / 16                               |
| Displacement (cc)                | 1598                                | 1598  | 1598                                 |
| Cylinder bore and stroke (mm)    | 79.5 x 80.5                         | 79.5 x 80.5   | 79.5 x 80.5                          |
| Compression ratio                | 16,2                                | 16,2  | 16,2                                 |
| Maximum power (KW [HP]/rpm)      | 59 (80) / 2700-4800                 | 70 (95) / 2750-4600                                     | 85 (115) / 3250-4000                 |
| Maximum torque (Nm/rpm)          | 230 / 1400-2400                     | 250 / 1500-2600   | 250 / 1500-3200                      |
| Fuel supply system               | Direct injection: Common Rail       |   |                                      |
| Ignition                         | Compressed ignition                 | Compressed ignition                                     | Compressed ignition                  |
| Atmospheric/Supercharged         | Turbocharged                        | Turbocharged  | Turbocharged                         |
| Fuel type                        | DIESEL                              | DIESEL  | DIESEL                               |
| Oil capacity in initial fill (l) | 5                                   | 5   | 5                                    |

**Performance**

|                              |          |                     |          |
|------------------------------|----------|---------------------|----------|
| Maximum speed (km/h)         | 172 (4a) | 182 (4a)   180 (6a) | 195 (6a) |
| Acceleration 0-80 km/h (s)   | 8,6      | 7,5   7,6           | 6,4      |
| Acceleration 0-100 km/h (s)  | 13,3     | 11,3   11,5         | 9,6      |
| Acceleration 80-120 km/h (s) | 12,6     | 10,9   11,1         | 15,3     |
| Acceleration 1000 m (s)      | 35,1     | 33,3   33,7         | 31,5     |

**Fuel consumption**

|                        |     |           |   |
|------------------------|-----|-----------|---|
| Urban (l/100 km)       | 4,5 | 4,4   -   | - |
| Extra urban (l/100 km) | 3,4 | 3,5   -   | - |
| Combined (l/100 km)    | 3,8 | 3,8   3,9 | 4 |

**CO<sub>2</sub> mass emission**

|                                    |     |          |     |
|------------------------------------|-----|----------|-----|
| CO <sub>2</sub> Urban (g/km)       | 115 | 113   -  | -   |
| CO <sub>2</sub> Extra Urban (g/km) | 90  | 91   -   | -   |
| CO <sub>2</sub> Combined (g/km)    | 99  | 99   101 | 103 |

**Transmission**

| Gearbox type                         |     | MQ250-5F            | MQ250-5F   DQ200-7F | MQ250-6F |
|--------------------------------------|-----|---------------------|---------------------|----------|
| Ratios                               | I   | 3,778               | 3,778   3,500       | 3,778    |
|                                      | II  | 1,944               | 1,944   2,087       | 1,944    |
|                                      | III | 1,185               | 1,185   1,343       | 1,269    |
|                                      | IV  | 0,816               | 0,816   0,933       | 0,971    |
|                                      | V   | 0,625               | 0,625   0,974       | 0,773    |
|                                      | VI  | -                   | -   0,778           | 0,625    |
|                                      | VII | -                   | -   0,653           | -        |
|                                      | R   | 3,600               | 3,600   3,721       | 3,6      |
| Group 1 ratio                        |     | 3,158               | 3158   4,438        | 3,158    |
| Group 2 ratio                        |     | -                   | -   3,227           | -        |
| Group 3 ratio                        |     | -                   | -   4,176           | -        |
| Speed 1000 rpm in IV/V/VI/VII (km/h) |     | 43.8 / 57.2 / - / - | 43.8 / 57.2 / - / - | -        |

| Chassis               | 1.6 TDI 80 HP (59 KW)<br>Start/Stop   | 1.6 TDI 95 HP (70 KW)<br>Start/Stop  <br>DSG Start/Stop | 1.6 TDI 115 HP (85 KW)<br>Start/Stop |
|-----------------------|---|---|--------------------------------------|
| Front suspension      | Independent type McPherson - coil springs - hydraulic shock absorber [Variable shock absorber settings (switchable shock absorber)] |   |                                      |
| Rear suspension       | Semirigid axle, coil springs and hydraulic shock absorber [Variable shock absorber settings (switchable shock absorber)]            |   |                                      |
| Steering System       | C-EPS (Column Electric Power System)  |   |                                      |
| Turning diameter (m)  | 10.6  | -   | -                                    |
| Brake system          | ESC Standard (including HHC, EBA, TCS, EDS, RKA, XDS), ABS Option for no EU6 Motor  |   |                                      |
| Front/Rear break type | Ventilated front brakes / Drum-Disc brakes in rear axle   |   |                                      |
| Front brakes (mm)     | Ø 276x24  | Ø 276x24  | Ø 276x24                             |
| Rear brakes (mm)      | TB203x38  | TB228x42  | Ø 230X9                              |

**Wheels**

|       |   |   |   |
|-------|---|---|---|
| Rims  | 5.5Jx15 ET40<br>6.5Jx16 ET47<br>7Jx17 ET51<br>7Jx18 ET51  | 5.5Jx15 ET40<br>6.5Jx16 ET47<br>7Jx17 ET51<br>7Jx18 ET51  | 5.5Jx15 ET40<br>6.5Jx16 ET47<br>7Jx17 ET51<br>7Jx18 ET51  |
| Tyres | 185/65 R15 88H<br>185/65 R15 88V<br>195/55 R16 91V XL<br>215/45 R17 91W XL<br>215/40 R18 91W XL | 185/65 R15 88H<br>185/65 R15 88V<br>195/55 R16 91V XL<br>215/45 R17 91W XL<br>215/40 R18 91W XL | 185/65 R15 88H<br>185/65 R15 88V<br>195/55 R16 91V XL<br>215/45 R17 91W XL<br>215/40 R18 91W XL |

**Dimensions**

|                          |                    |  |  |
|--------------------------|--------------------|--|--|
| Body type                | 5P                 |  |  |
| Length/width/height (mm) | 4059 / 1780 / 1444 |  |  |
| Wheelbase (mm)           | 2564               |  |  |
| Track front/rear (mm)    | 1525 / 1505        |  |  |
| Boot capacity (l)        | 355 (CNG 262)      |  |  |
| Fuel tank capacity (l)   | 40                 |  |  |

**Weights**

|  |                      |   |                      |
|--|----------------------|---|----------------------|
| In running order with driver (kg)          | 1247                 | 1253   1272                                 | 1258                 |
| Maximum weight with driver (kg) Front/Rear | 790 / 457            | 792 / 461   812 / 460                       | 798 / 460            |
| Maximum weight allowed (kg)                | 1670 / 1710 / 1750 * | 1670 / 1710 / 1750 *   1690 / 1730 / 1770 * | 1680 / 1720 / 1760 * |
| Maximum weight without brake (kg)          | 620                  | 620   630                                   | 620                  |
| Maximum weight w/brake 8% (kg)             | 1200                 | 1200  | 1200                 |
| Maximum weight w/brake 12% (kg)            | 1000                 | 1100  | 1200                 |

\* MMTA varia en función del acabado comercial

# Dimensions.



● Optional  
- Not available  
\* PERMISSIBLE GROSS WEIGHT (MIN/MAX):  
The weight varies according to the defined suspension for the configured version

| PETROL                                 | Reference | Style | Xcellence | FR |
|--|-----------|-------|-----------|----|
| 1.0 MPI 65 HP (48 KW) Start/Stop       | ●         | -     | -         | -  |
| 1.0 MPI 75 HP (55 KW) Start/Stop       | ●         | ●     | ●         | -  |
| 1.6 MPI 110 HP (81 KW)                 | ●         | ●     | ●         | ●  |
| 1.6 MPI 110 HP (81 KW) AO              | ●         | ●     | ●         | ●  |
| 1.0 EcoTSI 95 HP (70 KW) Start/Stop    | ●         | ●     | ●         | ●  |
| 1.0 EcoTSI 115 HP (85 KW) Start/Stop   | -         | ●     | ●         | ●  |
| 1.0 EcoTSI 115 HP (85 KW) Q Start/Stop | ●         | ●     | ●         | ●  |
| 1.5 TSI EVO 150 HP (110 KW) Start/Stop | -         | -     | -         | ●  |
| CNG                                    |           |       |           |    |
| 1.0 TGI 90 HP (66 KW) Start/Stop       | ●         | ●     | ●         | ●  |
| DIESEL                                 |           |       |           |    |
| 1.6 TDI 80 HP (59 KW) Start/Stop       | ●         | ●     | ●         | -  |
| 1.6 TDI 95 HP (70 KW) Start/Stop       | ●         | ●     | ●         | ●  |
| 1.6 TDI 95 HP (70 KW) DQ Start/Stop    | ●         | ●     | ●         | ●  |
| 1.6 TDI 115 HP (85 KW) Start/Stop      | -         | ●     | ●         | ●  |





SEAT is committed to a policy of continuous product development and reserves the right to make changes to specifications, colours and prices without notice. The information in this brochure can therefore be given as guidance only. While SEAT makes every effort to ensure that specifications are accurate at the time of publication, you should always check with your authorised SEAT Partner for the latest information. Due to limitations of the printing process the colours reproduced in this brochure may vary slightly from the actual paint colour and material. This vehicle and all its parts, as well as the original spares, were designed according to the Legal Regulations governing the prevention and minimisation of Environmental Impact, through the use of recycled/recyclable materials, with measures taken to achieve suitable recycling for the conservation and improvement of environmental quality.